

# GOLF

Catalogue



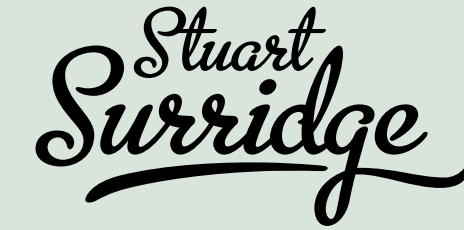
SURRIDGE

*Crafted by Surridge*  
Since 1867



# Contents

- ▶ Company Background
- ▶ Polo Shirts
- ▶ Performance Tops
- ▶ Camo Range
- ▶ Hoodies
- ▶ Socks
- ▶ Jackets
- ▶ Caps / Beanies
- ▶ Holdalls / Backpacks
- ▶ Incentives-uk Golf
- ▶ Sizing Chart



In 1867 Percy Stuart Surridge created a sports brand. He applied the principles of tradition and craft, with the concept of bringing innovation to improve performance, creating product defined by craftsmanship, originality and Britishness.

Today, we are a brand that not only connects with our markets and consumers but keeps with our origins and principle's set over 150 years ago.

Surridge Sport head office, warehousing and production facilities are based in Burnley, Lancashire. The site has in house embroidery, manufacturing, print and embellishment facilities along with a dedicated design and product development team and a fully equipped distribution/customer service team. This allows Surridge the flexibility to manage and service its portfolio of accounts simply and efficiently, maintaining day to day fulfilment of orders as well as looking to make improvements and handle any quick turnaround of kit that may be required. Careful planning with account management shall ensure the organisation's needs will be prepared for in advance and progressed in an organised and agreed fashion.

The company is wholly family owned in the UK and is self-financed operating from our own custom built facilities in Lancashire of 60,000 sq ft. We will be happy to produce copies of our audited accounts to satisfy any due diligence procedures and we formally extend an open invite to any of your personnel to visit us at any time.

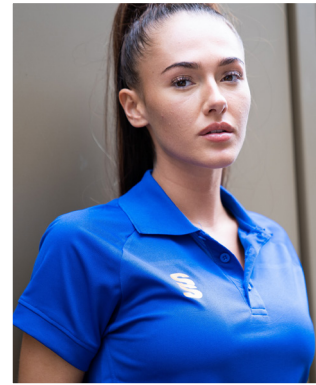
Surridge Sport uses factories in the Far-East for production of the proposed range. We have developed strong relationships with the suppliers and have worked with them for many years. We also have employees based in the factories to help manage the supply.

## Objective

Surridge Sport aim to supply you with a commercially attractive proposal and a high performance playing and training range at competitive prices. We also guarantee a high level of contract management, quality of product and a seamless transition of supply.







### Dual Polo

DU018

Black, Navy, Red, Royal or White

Performance Polyester pique fabric with contoured underarm side panel in a breathable reverse pique fabric. Placket neck collar and colour contrast Dual print on both shoulders. Branded **VAPADRI** neck tape. Choice of SS and Dual Print colours to suit your branding.

**Unisex Sizing:**

SJ, MJ, LJ, YTH, S, M, L, XL, XXL, XXXL

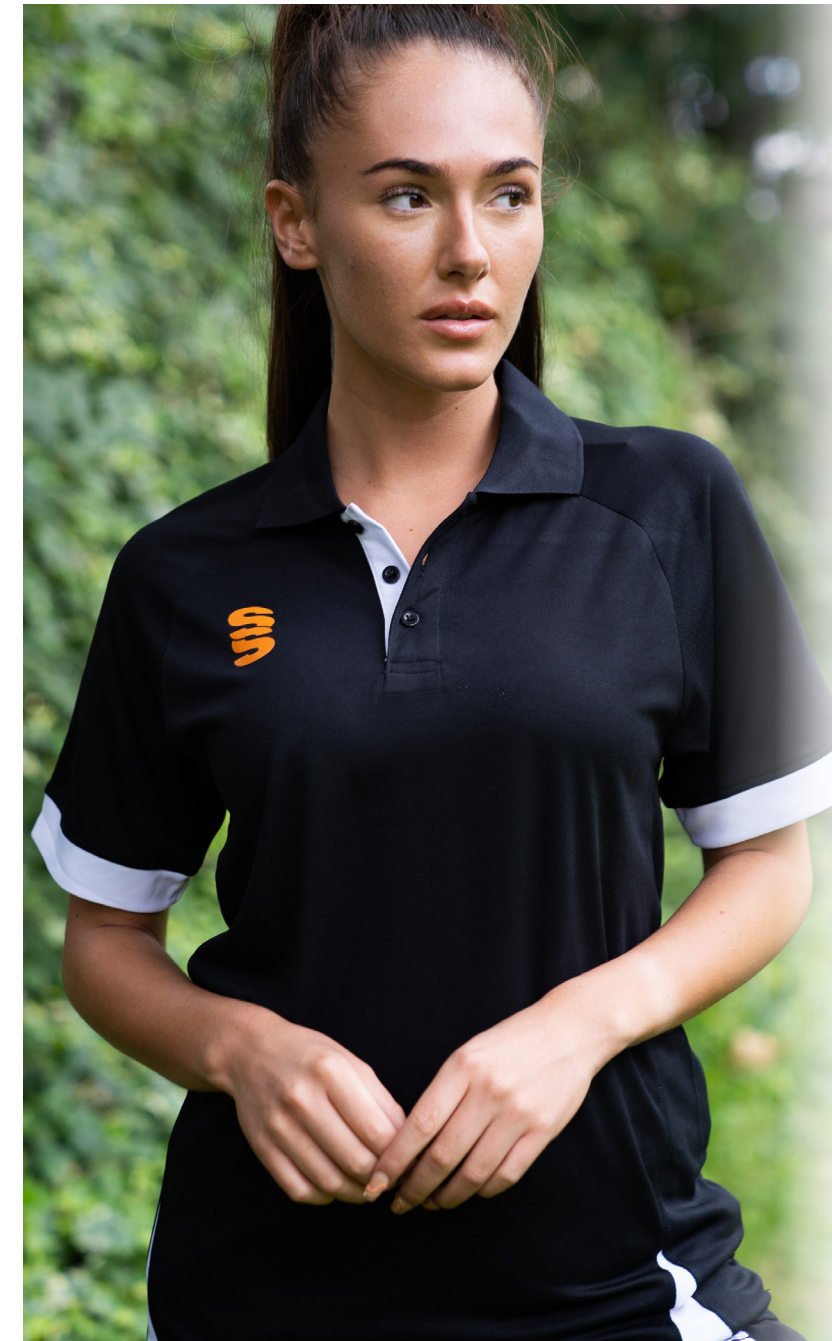
**Ladies sizes available with slight capped sleeve:**

4/6 (XSmall), 8/10 (Small), 12/14 (Medium), 16/18 (Large)



**UN BRANDED**

17 DUAL COLOUR OPTIONS



### Fuse Polo Shirt

DU366

Black or Navy

Performance Polyester pique, 3 button placket with 1x1 polyester rib collar. Forward position side seams with contrast insert Contrast back yoke, French seam shoulder construction for comfort and durability.

Forward side seams with contrasting coloured insert. Printed SS Logo to chest. Fabric weight: 150gsm.

**Sizes:**

SJ, MJ, LJ, YTH, S, M, L, XL, XXL, XXXL



**UN BRANDED**

17 DUAL COLOUR OPTIONS







### Blade Polo Shirt

SUR366

Performance Polyester pique, 3 button placket with 1x1 polyester rib collar. Forward position side seams with contrast insert.

Contrast back yoke with embroidered SS logo.

French seam shoulder construction for comfort and durability. Forward side seams with contrasting coloured insert.

Embroidered Surridge Logo to chest. Fabric weight: 150gsm.

**Unisex Sizing:**  
SJ, MJ, LJ, YTH, S, M, L, XL, XXL, XXXL



Navy/Emerald/White



### Dual Performance Top

DU013

Black Marl, Grey Marl, Navy Marl or Royal Marl

Made from melange Pro-Polyester with a lightly brushed feel and soft inner fleece lining. Subtle marl printed body. 1/4 Zip neck detail for breathability.

Dual print on both shoulders and reflective zip detailing.

Choice of SS and Dual Print colours to suit your branding.

**Unisex Sizing:**  
SJ, MJ, LJ, YTH, S, M, L, XL, XXL, XXXL



**UNBRANDED**

17 DUAL COLOUR OPTIONS







### Fuse 1/4 Zip Performance Top

DU368

Black or Navy

Made from heavy brushed french terry material to give warm and comfort. 1/4 Zip neck detail for breathability. Dual print on both shoulders and reflective zip detailing. Personalise the Fuse range with SS logo colour to match the chosen Dual print. Printed SS logo to chest. Fabric weight: 275gsm.

Sizes: SJ, MJ, LJ, YTH, S, M, L, XL, XXL, XXXL. Also available in XXSJ (3-4yrs) & XSJ (5-6yrs)



UN BRANDED

17 DUAL COLOUR OPTIONS



### Blade Performance Top

SUR368

Performance Polyester French Terry Material. Contrast Chest Panel and contrast back panel. Half Zip with SS performance locking rubber zip toggle. French seam shoulder construction for comfort and durability.

Forward side seams with contrasting colour insert.

Embroidered Surridge Logo to chest. Fabric Weight: 250gsm.

Unisex Sizing:

SJ, MJ, LJ, YTH, S, M, L, XL, XXL, XXXL



Black/Purple/White



Black/Red/White

Navy/Maroon/White

Black/Orange/White

Black/Emerald/White



Navy/Red/White

Navy/Royal/Amber

Navy/Royal/White

Navy/Sky/White





### Camo Performance Top

DU032

Black or Navy

275 gsm structured soft feel camo woven polyester material. Ultra modern fitted ¼ zip collar with fitted sleeves and binned sleeve hems.

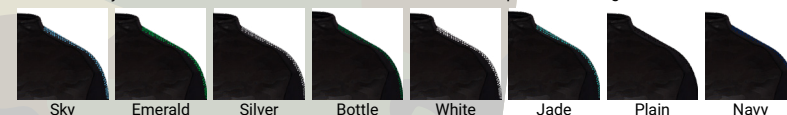
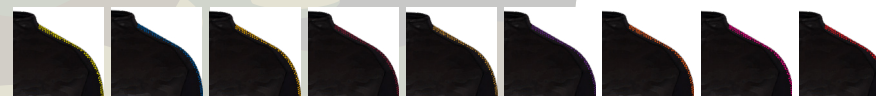
Adjustable draw cords in hem. Dual print on both shoulders and reflective zip detailing.

SS printed to chest to match Dual Print colour.

**Unisex Sizing:**  
SJ, MJ, LJ, YTH, S, M, L, XL, XXL, XXXL

**UNBRANDED**

17 DUAL COLOUR OPTIONS



### Camo Hoodie

DU012

Black, Grey, Navy or Royal

100% performance polyester and bonded fleece lining. Modern slim fit with toggles on hem for adjustable sizes.

Full zip hoodie with reflective, water resistant zip detail.

Two Large zip pockets with soft fleece lining and elastic binding at sleeve ends.

**Unisex Sizing:**  
SJ, MJ, LJ, YTH, S, M, L, XL, XXL, XXXL



**UNBRANDED**

17 DUAL COLOUR OPTIONS







## Blade Hoodie

SUR367

Polyester and Cotton fabric blend. Contrasting inner hood lining and chest panel.

French seam shoulder construction for comfort and durability.

Branded eyelets with tube draw cord. Large front hoodie pocket. Forward side seams with contrasting insert.

Embroidered Surridge Logo to chest. Fabric Weight 300gsm.

### Unisex Sizing:

SJ, MJ, LJ, YTH, S, M, L, XL, XXL, XXXL



Navy/Royal/Amber



Black/Amber/White



Black/Orange/White



Black/Red/White



Black/Purple/White



Navy/Emerald/White



Navy/Bottle/Amber



Navy/Emerald/White



Navy/Red/White



Navy/Maroon/White



Navy/Sky/White



Navy/Royal/White

## Fuse Hoodie

DU367

Black or Navy

Polyester and Cotton fabric blend. French seam shoulder construction for comfort and durability. Branded eyelets with tube draw cord. Large front hoodie pocket. Forward side seams with contrasting insert. Fabric Weight: 300gsm.

Personalise the Fuse range with SS logo colour to match the chosen Dual print.

Printed SS logo to chest.

### Sizes:

SJ, MJ, LJ, YTH, S, M, L, XL, XXL, XXXL



**UNBRANDED**

17 DUAL COLOUR OPTIONS





### Surridge Gripper Sock SUR480

100% acrylic, modern quarter socks with printed gripper on the sole for comfort and styling. Minimums apply.

Sizes: 3-6 and 7-11



**Bespoke Badge Option:**

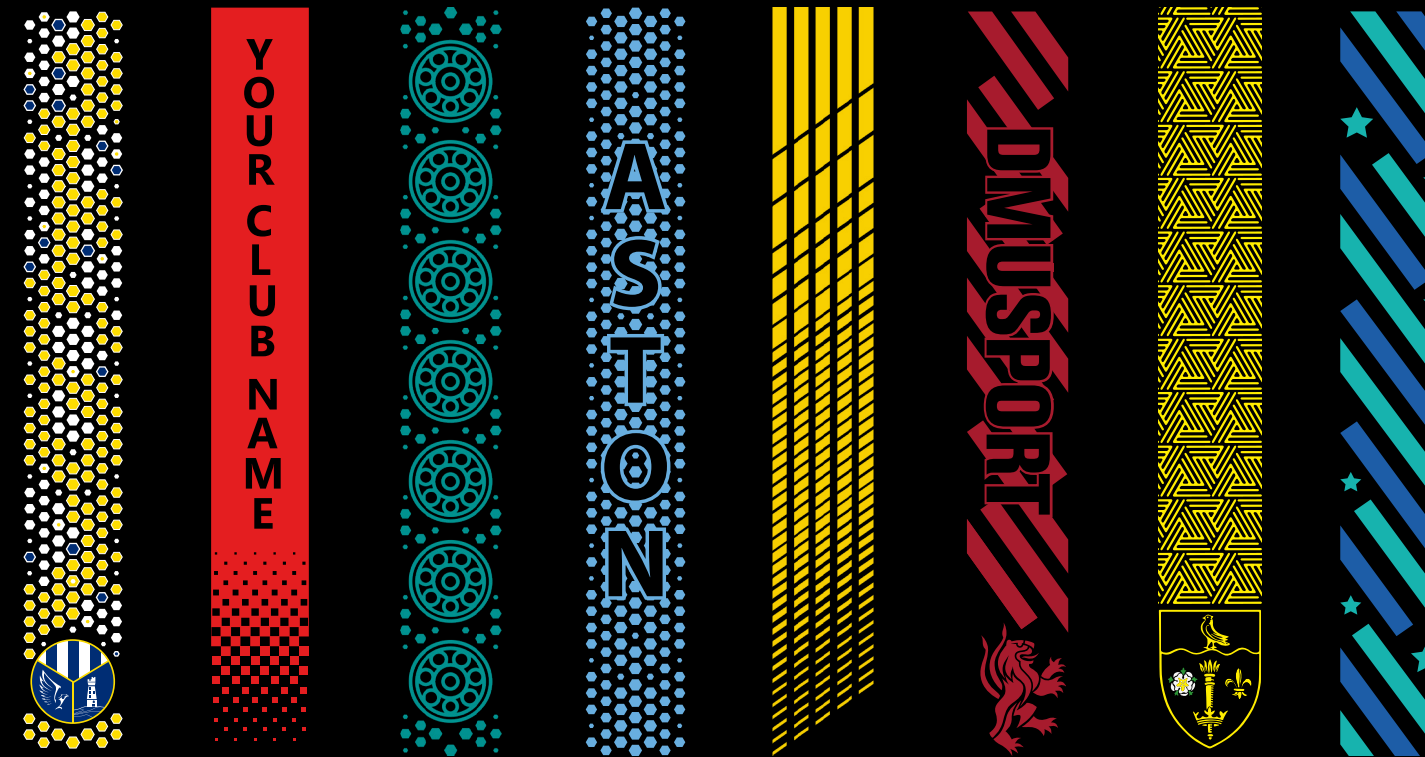
Add your Club Badge in full colour.

Grippers will also match to Club Badge



## QUAL TRAINING RANGE

We can also produce a bespoke print with a minimum of 100 prints (50 garments).



### UN BRANDED

All products showing the unbranded logo are available without the SS logo.





**NEW Dual Elite 1/4 Zip Training Jacket DU381**



Black or Navy

100% Polyester Dobby Spandex. Two pockets with zip. Binding at hem and cuffs.  
**Sizes:** SJ, MJ, LJ, YTH, S, M, L, XL, XXL, XXXL



**UN BRANDED**

17 DUAL COLOUR OPTIONS



**Dual Training Jacket DU002**



Black, Navy, Red or Royal

Wax Coated outer shell, light and fully waterproof. Reflective, water resistant zip detail and 2 zip pockets  
 Mesh lined hood with adjustable toggles.  
 Underarm vents to stay breathable but warm.

**Unisex Sizing:**

SJ, MJ, LJ, YTH, S, M, L, XL, XXL, XXXL



**UN BRANDED**

17 DUAL COLOUR OPTIONS







**NEW Fuse Flexi Cap SUR470**

The Fuse Flexi cap is a modern shaped cap that is the lighter, sleeker, smarter and more comfortable choice. It's 6 panels are well finished, combining with a lightweight visor fabrication and new, three-layer, multifunction sweatband. Inner sweat band and elastic fitting gives the most comfortable fit there is.



Bottle



Navy

Maroon

Black

**Baseball Cap SUR421**

Classic fitted cap with comfortable five panel design. Eyelet mesh back panels for improved air flow & ventilation. Interior woven tape reinforcement for strength & durability.

Adjustable tab at the back with hook & loop closure for custom fitting.

**ONE SIZE**



Royal



Bottle

Maroon

Navy

Red

Emerald

Black

**Snowstar Beanie BC450**

**ONE SIZE**

100% Soft-touch acrylic. Dual style - cuffed or slouch. Two-tone pom pom. Double-layer knit. Ribbed cuff. Hand wash only.



Bottle Green/  
Off White

Bright Royal/  
White

Burgundy/  
Off White

Classic Red/  
White

Dusky Pink/  
Off White

French Navy/  
Light Grey

Fuchsia/  
Off White

Gold/  
Black

Graphite Grey/  
Light Grey

Heather Grey/  
Black

Kelly Green/  
White

Mustard/  
Off White

Off White/  
Mocha

Orange/  
White

Sky Blue/  
White

Surf Blue/  
Off White

White/  
Black

Black/  
Bright Royal

Black/  
Classic Red

Black/  
Graphite Grey

Black/  
Lime Green

Black/  
Orange

Black/  
White

Black/  
Yellow





**Small Holdall SUR364**

Wet compartment. 100% modern nylon with 2 end pockets.

Size: 64cm x 27cm x 30cm



Navy

Black

**Dual Backpack DU004**

Size: 55cm x 38cm



Navy

Black

Black Reverse

**UN BRANDED**

17 DUAL COLOUR OPTIONS



Welcome to the Incentives UK Online Catalogue

# Incentives-uk

Golf accessories, bespoke promotional materials, plus much, much more...

ALL PRODUCTS - ABOUT US - CONTACT US

Search:

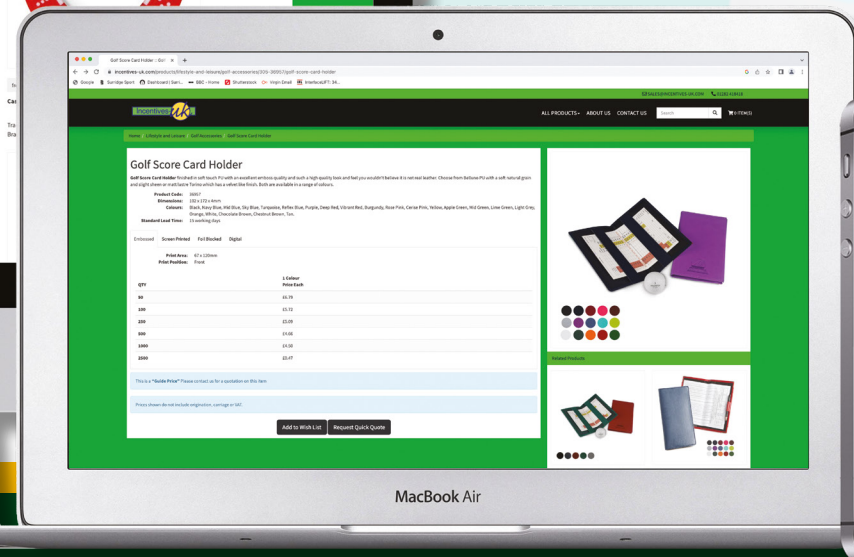
www.incentives-uk.com

QR Code

tel: 01282 418 418 email: sales@incentives-uk.com

SDL Group Ltd, t/a Incentives-UK, Britannia Centre, Network 65 Business Park, Bentley Wood Way, Burnley, Lancashire. BB11 5ST.

Technology





### Golf Score Card Holder

Product Code: 36957

Black, Navy Blue, Mid Blue, Sky Blue, Turquoise, Reflex Blue, Purple, Deep Red, Vibrant Red, Burgundy, Rose Pink, Cerise Pink, Yellow, Apple Green, Mid Green, Lime Green, Light Grey, Orange, White, Chocolate Brown, Chestnut Brown, Tan

Finished in soft touch PU with an excellent emboss quality and such a high quality look and feel you wouldn't believe it is not real leather. Choose from Belluno PU with a soft natural grain and slight sheen or matt lustre Torino which has a velvet like finish. Both are available in a range of colours.

Dimensions: 102 x 172 x 4mm



### Vegas Poker Chip Dome Markers

Product Code: 18107

Black, Blue, Green, Orange, Pink, Red, Sky Blue, Yellow

Plastic Poker chip style ball marker with a removable magnetic ball marker, available in eight bright colours. Marked subtly with the Asbri brand name .x000D\_x000D\_ **Dimensions:** 40mm Diameter



### Divot Tool with Ball Marker

Product Code: 27811

Nickel Plated

Premium quality divot repair tool with polished Nickel plating. Complete with domed magnetic ball marker.

Full Colour Print. Min. 25pcs.

Dimensions: 24mm Diameter



### Virginia Hinge Box

Product Code: 18133

Silver Fork, Silver Marker and 3 Plain White Tees

One silver metal fork and one silver metal ball marker both printed to your design with three plain 54mm white wooden tees in a hinge box.

Dimensions: 98 x 75 x 20mm





## Pro-Brella FG Vented Umbrella

Product Code: 08002

Black, Navy, Navy/White, Royal/White, Scarlet/White or Black/White

Stormproof golf umbrella with 16mm diameter fibreglass shaft. Polyester canopy and tie wrap and special twin polyester canopy with air vent. Matching polyester sleeve.

Dimensions: 750mm



## Turnberry Tri-fold Towel

Product Code: 25911

Black, White, Navy Blue, Royal Blue, Dark Green and Red

Top quality 100% cotton, 500 gram luxury tri-fold velour golf towel, embroidered to your design, up to 10,000 stitches, with a carabiner clip for attachment to golf bag. **Dimensions:** 500 x 130mm folded.



**Incentives-uk**  
www.incentives-uk.com

SIZE	SJ	MJ	LJ	YTH	S	M	L	XL	XXL	XXXL							
TOPS/SHIRTS/JACKETS					REG	REL	REG	REL	REG	REL	REG	REL	REG	REL	REG	REL	
LADIES SIZE GUIDELINE*				8	8	10	10	12	12	14	16	16	20	18	22	20	24
LADIES BUST - INCH				30	30	32	32	34	34	36	38	38	42	40	44	42	46
LADIES BUST - CM				76	76	81	81	86	86	91	96	96	106	101	111	106	116
JUNIOR AGE GUIDE	7/8	9/10	11/12	13/14	13/14												
JUNIOR HEIGHT - CM	128	140	152	164	164												
PANTS/SHORTS																	
LADIES WAIST - INCH				24	26	28	30	32	34	36							
LADIES WAIST - CM				63.5	66	71	76	81	86	91							
DRESS LENGTH					SHORT	STANDARD	LONG	X LONG	XX LONG								
DRESS LENGTH - INCH/CM					80/31.5	84/33	88/34.5	92/36	96/37.5								
JUNIOR AGE GUIDE	7/8	9/10	11/12	13/14													
JUNIOR HEIGHT - CM	128	140	152	164													

REG REL SJ MJ LJ  
Regular Fit Relaxed Fit Small Junior Medium Junior Large Junior

Measurements above are APPROXIMATE Body Sizes (except for Ladies Size Guideline), as individuals shape varies considerably. On these Body Sizes: SLIM items should be a snug fit, REGULAR items a traditional fit, RELAXED items should be a loose fit. Check item specifications for its stated fit before ordering.

Note: If a product does not have a FIT listed, use the REGULAR columns. For the Blade range use Regular fit.

\* Take care when using 'Ladies Size' for Unisex garments, as the fit will not be suitable for every body shape.

### WASHING INSTRUCTIONS

Surridge Sport garments are manufactured from top quality fabrics. All fabrics & logos undergo stringent quality tests to ensure durability and wash-ability. They will last for many years if properly cared for. When washing garments always refer to the instructions on the garment label.

### Playing Kits

First wash - Always wash shirts, shorts and socks inside out & separately to remove surface dye.

Avoid leaving kits folded or bundled together for any length of time whilst damp or soiled. Remove excess mud and wash as soon as possible after use to avoid stains from setting.

Garments may discolour due to staining by substances such as mud, grass, petroleum jelly etc, which may not entirely be removed by washing alone. Treat stains directly with a stain remover as soon as possible. Take care not to use stain remover on transfers applied to the garment as this may effect the quality of the print. Some of the toughest stains may require more than one treatment.

- Do not over load the washing machine and always wash light and dark colours separately.
- Do not wash above the temperature stated on the garment label. (many items 30°C)
- Do not use fabric softener.
- If the garment can be tumble dried (see care label) always tumble dry cool.
- Never iron printed motifs

### Training Wear / Outer Wear

Dirt on outer wear (padded jacket, rain jacket, training jacket) should be wiped off with a damp cloth. These garments do not require regular washing as this will remove the shower proofing.

If necessary wash inside out, no hotter than 30 degrees on a synthetic wash.

- Do not use fabric softener.
- Do not tumble dry.
- Never iron printed motifs.

Surridge Sport does not accept liability for discolouration or damage to garments due to incorrect laundering.





Britannia Centre, Network 65 Business Park, Burnley, Lancashire, BB11 5ST

**tel:** +44 (0) 1282 418 418 **fax:** +44 (0) 1282 418 419

**online:** [www.surridgesport.com](http://www.surridgesport.com)

**email:** [sales@surridgesport.com](mailto:sales@surridgesport.com)

**twitter:** @surridgesport

**facebook:** SurrIDGE Sport

All information within this catalogue was correct at the time of production and is subject to change without prior notice.